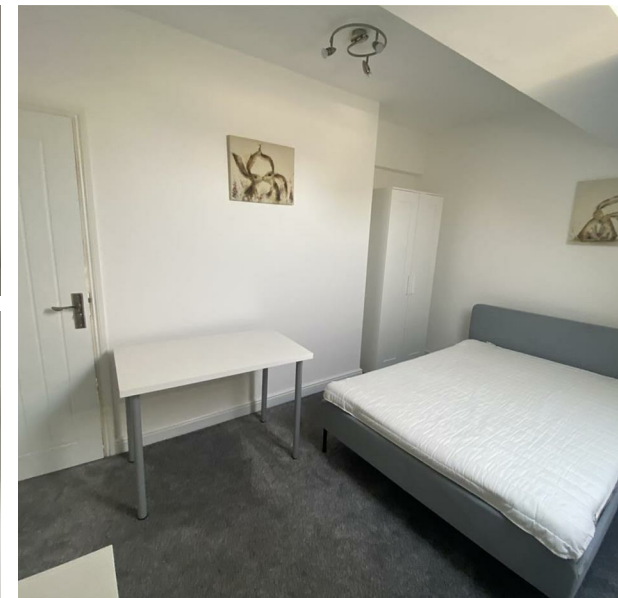
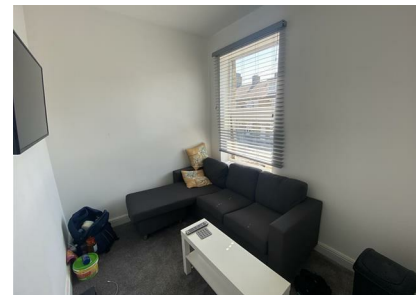


Rushton Road, Bradford, Yorkshire, BD3 8JQ

£895 Per Month

Council Tax Band: A



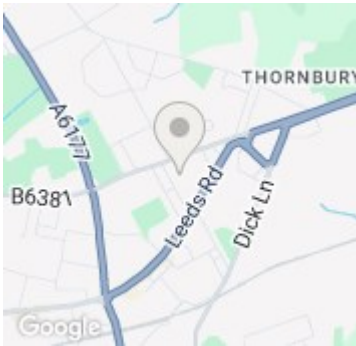
We are pleased to offer to let this well presented 4 Bedroom terrace, this property benefits from been close to local amenities and has great transport links.

Council Tax Band- A

This property briefly comprises of;



Keighley



Energy Efficiency Rating		
	Current	Potential
Very energy efficient - lower running costs		
(92 plus) A		
(81-91) B		
(69-80) C		
(55-68) D		
(39-54) E	57	72
(21-38) F		
(1-20) G		
Not energy efficient - higher running costs		
England & Wales	EU Directive 2002/91/EC	